

Focus on iThemba *End of Year Report - 2021*

Focus on iThemba (RF) NPC is an accredited non-profit, public benefit (18A) organisation - a place of Hope
www.focusonithemba.org +27 31 710 1800



www.focusonithemba.org

FOCUS ON ITHEMBA
ITHEMBA CAMPUS, JACOB HOUSE, 111 NGWELE ROAD,
HILLCREST, KWAZULU-NATAL, SOUTH AFRICA







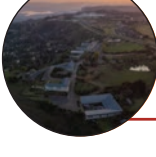



COMPANY REGISTRATION NO: 2003/009035/08
NON-PROFIT ORGANISATION NO: 035-958-NPO
PUBLIC BENEFIT ORGANISATION (PBO) NO. 930003051

info@focusonithemba.org | +27 (0) 31 710 1800 | www.focusonithemba.org |  [focusonithemba](#) |  [focusonithemba](#)

“Our children are our greatest treasure. They are our future.”

- Nelson Mandela

Contents

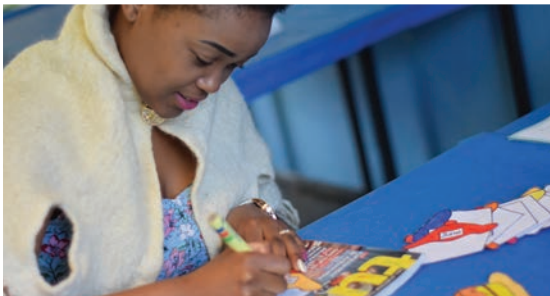
	OUR VISION, MISSION & GOALS	Pg 3
	MESSAGES FROM OUR LEADERS	Pg 4
	2021 IMPACT IN NUMBERS	Pg 5
	ITHEMBA EDUCARE PROGRAMME	Pg 6,7
	ITHEMBA SCHOLARS PROGRAMME	Pg 8,9
	ITHEMBA HOMES ESTHER MODEL	Pg 10
	ITHEMBA CAMPUS	Pg 11
	- LOOKING TO 2022 - GIVING OPPORTUNITIES	Pg 12
	THANK YOU	Pg 13
	MEET OUR TEAM	Pg 14



Making
a meaningful
and lasting
impact!



#OurVisionMissionandGoals



OUR VISION

Growing Hearts and Minds.

OUR MISSION

To be a catalyst for contagious joy by providing bridges of hope for life-altering positive change by investing in children through quality education.

OUR GOALS

- To identify and collaborate with **Friends and Donors** with common passions and connect them with our programmes and initiatives to experience the contagious joy of giving.
- To expand our elevating **iThemba Educare Programme** to ensure more young children receive quality age-appropriate education within their first 2000 days and beyond.
- To engage with our community by **sharing knowledge**, building partnerships and thereby uplifting the Pre-Schools we partner with.
- To expand our life-changing **iThemba Scholars Programme** to broaden the opportunity for previously disadvantaged boys and girls to attend Waterfall Schools and to guide them through their educational journey.
- To continue to support our iThemba foster children in our **Esther Model** with their schooling and living costs up to Grade 12 by providing professional support.
- To continue to create **an indigenous haven** for flora and fauna on the iThemba Campus.
- **To halve the carbon footprint** of our iThemba Campus by the year 2025.
- To ensure the organisation is **sustainable** over the long term and to prioritise effective communication with our Friends and Donors.

MESSAGES FROM OUR LEADERS



“

Start where
you are
use what
you have
and do what
you can ”

Danie van den Heever
Founder and Executive Chairman



Humility and growth. These are the two words that come to mind as I reflect on the past few years' events. Growth can take on many forms, and its timeline may vary from person to person, but for Focus on iThemba, growth has been the living out of our vision, Growing Hearts and Minds, both on and off the iThemba Campus.

Our team continued impacting the community we serve through our iThemba Educare and Scholars Programmes through the faithful investment of friends and donors. This impact is one of lasting value and holds great significance to us. The growth of the iThemba Campus has also been a truly humbling experience to behold. This 41 acre Place of Hope has become a hub of educational activity, with Waterfall Schools bringing an abundance of life to it. We once again thank our donors for believing in our campus vision and sowing faithfully into its development.

2021 also marked a personal milestone as our team celebrated with me fifty years in business. From the humble beginnings of my bicycle shop, Danie se Fiets Winkel, to the establishment of our foundation, Focus on iThemba, and other business ventures. I can genuinely say that I appreciate all the growing and learning opportunities. Fifty years is a considerable amount of time to learn, grow, fail forward and make a difference, and all are essential character-building opportunities.

A significant part of this journey was the start of Focus on iThemba in 2003. Judy and I hold iThemba and all it represents very close to our hearts and love to see our vision lived out in and through the Programmes. We are grateful to ALL our friends and donors who have faithfully walked this road with us; your partnership has made an impact on our lives just as much as it has on Focus on iThemba.

As we head towards the end of the year, I take this opportunity to wish you a joyous Christmas and a peaceful holiday. I hope it is a time to reflect, restore and recharge. We trust 2022 holds more promising growth with the Lord guiding our way.

Danie van den Heever
Focus on iThemba Founder and Executive Chairman

Dear friends,

As 2021 draws to a close, all of us at Focus on iThemba are reflecting on the year's remarkable achievements and enthusiastically looking to what lies ahead in 2022. I would like to extend my sincerest appreciation to all our friends, donors and partners - without you we would never achieve so much. I also thank our board members for their wisdom and continuous guidance, and lastly, my power team of staff who have hearts larger than life.

Focus on iThemba is pleased to report a highly productive 2021. From successfully completing our 4th transformation project - Project Star, facilitating an Education Disaster Relief Fund for families in need after the July riots, building and fitting out a STEAM Centre (Science, Technology, Engineering, Arts and Mathematics) for Waterfall College, to expanding our team by adding a valuable resource to our iThemba Scholars programme. Our iThemba Educare and Scholars Programmes continue to thrive and have a high impact in providing access to quality education. We have facilitated various ECD teacher training courses, including Business Management and First Aid. I am particularly excited about the parenting workshop we host at our partner Pre-Schools; the course is called Raising Highly Capable Kids and is facilitated by Focus on the Family Africa.

I am thrilled to lead Focus on iThemba into 2022 and continue to facilitate positive change and help children reach their full potential. We have a few new and exciting initiatives planned which I look forward to sharing with you throughout the course of next year. Together we are stronger and thank you once again for your partnership.

May you have a wonderful holiday season with your family and friends, and I hope that the New Year brings you much health, happiness and prosperity.

Yours in making a difference,

Tayla Goss
Focus on iThemba Team Leader



2021 IMPACT IN NUMBERS

REACH

524

CHILDREN BENEFITTED FROM OUR EDUCARE PROGRAMME

01

SUCCESSFUL ECD TRANSFORMATION PROJECT

13

SCHOLARS & THEIR FAMILIES BENEFITTED FROM OUR SCHOLAR PROGRAMME

19

TEACHERS ATTENDED VARIOUS NELRU TRAINING COURSES

07

PRINCIPALS & ADMIN SUPPORT STAFF RECEIVED BUSINESS TRAINING

05

TEACHERS COMPLETED A FIRST AID COURSE

22

PRE-SCHOOL PARENTS ATTENDED AN EFFECTIVE PARENTING WORKSHOP

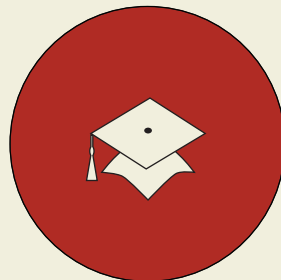
10

FEMALE PRINCIPALS WERE EMPOWERED

OTHER REASONS TO SMILE



COMPLETION OF NEW STEAM CENTRE ON ITHEMBA CAMPUS FOR WATERFALL COLLEGE



TWO ITHEMBAKIDS IN OUR FOSTER CARE PROGRAMME ARE MATRICULATING & ONE IS GRADUATING



OUR TEAM GREW WITH THE ADDITION OF AN ITHEMBA SCHOLARS PROGRAMME MANAGER

ITHEMBA EDUCARE PROGRAMME

There is much to celebrate about the impact our Educare Programme has made over the last year. From the opening of a newly transformed ECD centre to the successful completion of various training programmes, our mission of providing bridges of hope for life-altering positive change has been fulfilled.

Our hearts are full of humility and gratitude for the support we have received towards our Educare Programme over the last year. Every heartfelt donation that was sown has reaped a harvest of hope and will contribute to a lasting impact being made.

TRAINING AND SELF-DEVELOPMENT

We were fortunate to have 31 teachers and principals enrolled on various training and development courses this year. The value of these courses has been evident not only in the quality of education that is being produced in the classroom, but in the improved confidence, spirit and morale of these inspiring women. Through the Business Management Course held in November, our principals gained helpful knowledge and skills on the practice of good business keeping. This is an important aspect of our Programme as it supports the goal of helping our partner Pre-Schools become successful and sustainable enterprises.

A very big thank you to our training partners, the Natal Early Learning Resource Unit (NELRU), Ikhono Business Solutions and Applause Training for playing a role in their development.



BELOW IS A SUMMARY OF THE TRAINING OUR TEACHERS RECEIVED OVER THE COURSE OF THE YEAR

1. Orientation Course
2. Basic Educare Course
3. Baby/Toddlers Story Telling Course
4. NQF Level 4 (2020 ladies completed)
5. First Aid Level 1 Course
6. Business Management Course

EFFECTIVE PARENTING WORKSHOP

Our partnership with Focus on the Family Africa continues to strengthen through the implementation of the Effective Parenting Workshop. The 13-week course, 'Raising Highly Capable Kids', was held at Sthandokuhle Pre-School this year and had 22 parents attend. These workshops are designed to empower and equip parents, guardians or caregivers with the right knowledge and tools to promote the holistic development of the child.

"Ultimately our aim is to facilitate these workshops in all ten schools," says Tayla-Anne Goss, Focus on iThemba Team Leader. "Our Programme recognises the importance of parenting in the wholesome development of the child and what a significant role parents play in shaping the futures of their children." Through our partnership with Focus on the Family we aim to empower our parents with the knowledge to positively influence the development of their children and equip them with the right tools to Grow their Hearts and Minds.

The workshops are interactive in nature and cover helpful topics like: Understanding childhood stages; effective communication between parent and child; behaviour and discipline; parenting techniques; support with school.



The parents expressed their gratitude to Focus on iThemba and Focus on the Family for taking the time to present the Programme to them. Some parents have never graduated in anything and for them this was a tremendous achievement.

Excerpt from feedback report by Focus on the Family Africa



iTHEMBA EDUCARE PROGRAMME CONT.

COMPLETION OF OUR FOURTH TRANSFORMATION PROJECT

Our team was overjoyed to have successfully facilitated another transformation project in April 2021. Inkanyezi Pre-School, otherwise referred to as Project Star, joined our Programme in 2020 as one of our ten partner Pre-Schools and was the fourth candidate to receive a structural upgrade.

Principal of Project Star, Cynthia Cibane, inherited the operation of the school from her mother and spent the last 10 years admirably doing everything within her means to facilitate early childhood development, however, was **limited by inconducive facilities**. The School comprised of two wendy houses as classrooms and two rusty containers as an office/storage and kitchen space. Only one toilet and tap were available for use by staff and children and the outdoor play equipment was in no condition to be used. Because flooring in the one wendy house was unsafe, Cynthia had to accommodate all age groups in the other classroom and as a result age-appropriate learning could not taking place.

Through the collaborative effort of **25 project partners**, a team of awesome builders and professionals including a Project Manager, Engineer, Architect and Land Surveyor, Project Star now provides a space for children to grow, learn and thrive through the proper implementation of ECD. The unique, cheerful space utilises five insulated shipping containers for the use of **two classrooms, a kitchen, a sick-bay, an office, a storage unit and toilets** for staff and children respectively. In addition, the children benefit from the installation of a **large playground area** to promote healthy gross-motor development and also have access to age-appropriate learning materials and equipment. A **5000l JOJO tank** has also been installed on site as a means to promote water security and sustainability. Looking ahead, the School will see expansion through the introduction of a third classroom and a vegetable garden in 2022.

Project Star also now benefits from a **partnership with GROW with EduCare Centres** through the provision not only of quality ECD resources, equipment and training but also on-going business training and mentorship. Focus on iThemba has enjoyed a long-standing relationship with GROW and has seen the value of their work in four of our other Pre-Schools as well.

"We are incredibly grateful to our partners in hope for their generous support towards Project Star. Together, we have made a meaningful impact and have helped reshape the future of this amazing school." *Tayla-Anne Goss, Focus on iThemba Team Leader*



OTHER PROGRAMME HIGHLIGHTS

1. ECD STIMULUS RELIEF FUND

The Fund aimed to help ECD services recover from the loss of income brought on by COVID-19. All of our ten partner Pre-Schools successfully applied for relief from the Department of Social Development. This opportunity was warmly welcomed by our principals after the challenge they faced last year.

2. TEAM BUILDING INITIATIVES

We enjoyed facilitating a few team building initiatives with a couple of donors this year. The team from Kerry Ingredients internally fundraised money for Project Star's jungle gym which is now a much LOVED space by the children of Inkanyezi Pre-School. HUL International had their team 'go green' by erecting a large vegetable tunnel at Lethusizo Pre-School and donating seedlings for the School to grow for food and additional income. This installation of a sheltered vegetable garden has added much value to the school!



iTHEMBA SCHOLARS PROGRAMME

When we reflect on the growth of this Programme we can only but feel an overwhelming sense of gratitude and appreciation for the donors who support it. As this quote by Warren Buffett so aptly expresses, “Someone is sitting in the shade today because someone planted a tree a long time ago,” the investment that is being made into the futures of these children is a lasting and life-changing one.

ADDITION OF TWO NEW SCHOLARS IN JANUARY 2021

2021 saw our Programme expand to 13 scholars - the two newest ones joined us in Grade 000 at Waterfall Pre-Primary and have embraced every aspect of school life! This entry point into the Programme supports our belief that early childhood development is the most crucial window for brain development and allows our scholars to build a firm foundation for learning in later phases of schooling.

Our 13 scholars range from Grade 000 to 7, 4 at the Pre-Primary and 9 at the Preparatory School. We are excited to have our two eldest scholars finish their primary schooling this year - a special milestone not only for them but for us too as they were the first ones to join our Programme in 2016.

WELCOMING A NEW PROGRAMME MANAGER

Another big highlight for our team was the introduction of a Programme Manager in August. This role, filled by retired educator, Sharron Lane, adds tremendous value to the Programme in that it closely monitors and evaluates the progress of each scholar while forming and strengthening a relationship with their teachers. We have already seen the effectiveness of this new aspect of the Programme and thank Sharron for laying the foundation for it's success!

GET TO KNOW SHARRON BETTER

“I’m a retired educator, but still passionate about teaching. I assist children who need a little extra and one on one time to clear some stumbling blocks. It is very gratifying to see their confidence soar as they achieve their goals.

I have always been deeply interested in the vision of the iThemba Campus. I became involved with the growing of a quality educational hub once Danie van den Heever introduced me to his dream in 2013. I assisted with the development of Waterfall Pre-Primary, and once that was up and running, we started on the Foundation Phase and ultimately the Intermediate Phase. It gives me great joy to see these thriving schools today offering excellent education to the Upper Highway.

I am excited to have been invited to join the Focus on iThemba Team to monitor the iThemba Scholars Programme. The number of participants is growing each year and I hope to establish a portfolio which will assist the Team in identifying suitable candidates, liaising with the scholars and their educators and monitoring progress to report back to the donors who fund this amazing outreach to disadvantaged children”.





iTHEMBA SCHOLARS PROGRAMME CONT.

SELECTION OF TWO NEW SCHOLARS FOR 2022

We are fortunate to be in a position to expand our scholar intake by another two and have them start at Waterfall Pre-Primary in Gr 0000 next year. Our Team began the selection process in the later half of this year by identifying and observing children from our partner Pre-Schools who demonstrate strong academic potential and family support. This selection process is quite rigorous in nature and relies on the expertise of our ECD Monitor, Scholars Programme Manager and Social Worker to work together to identify a suitable candidate for our Scholarship Programme. We cannot forget the role of the teachers and principals of both our partnering Pre-Schools and Waterfall Pre-Primary - their input in the process is just as important.

After the readiness assessment that was held in October, two children were earmarked as suitable candidates and our team could follow on with formal parent interviews and home visits. Proper home support is an important part of the scholarship and this is why we involve our social worker in the process. Both scholars families' met our expectations and we were delighted to offer them a scholarship to attend Waterfall Schools from next year.

QUALITY EDUCATION

An extraordinary part of this Programme is the privilege of bearing witness to the growth of each child. Every growth story is different, every academic journey is unique. What is similar however is their exposure to a learning environment characterised by innovative thinking, engagement and 'unearthing the treasure in each child'. We value our relationship with Waterfall Schools and appreciate all that they do in and for our scholars.



The academic development of my child would not have been possible without the generous support of Focus on iThemba and their donors. This scholarship has begun such a good work in my child and I am amazed at how well she is doing. I am so hopeful about her future knowing she will have a promising one ahead of her.



Parent
Grade 00 iThemba Scholar

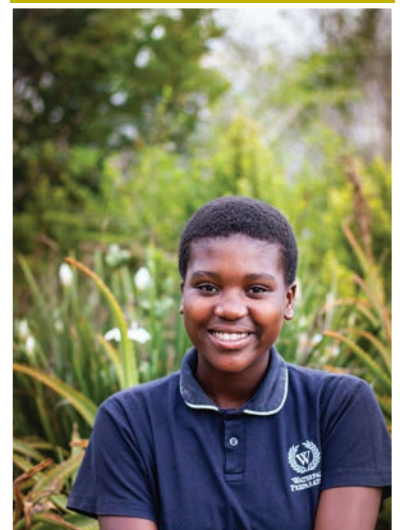
OTHER PROGRAMME HIGHLIGHTS

1. KERRY INGREDIENTS GOLF DAY

We were so grateful to once again be the sole beneficiary of the Kerry Annual Charity Golf Day, and even more grateful to have received R308 483.25 from the day. A very deep and heartfelt thank you to the Kerry team for their on-going support.

2. CEDERBERG CIRCUIT

Our Founder, Danie van den Heever and the Dad's Army cycling team took on the Cederberg Circuit in October this year wearing our brightly coloured cycling shirts. Not only did these gentlemen cover 247kms of distance in 3-6 days but they made a generous donation to our iThemba Scholars Sustainability Fund!



ITHEMBA HOMES ESTHER MODEL

For nearly 15 years, Focus on iThemba was involved with cluster foster care for orphaned and vulnerable children where homes on Campus offered them a place of acceptance, love and refuge. Through the kindness and generosity of many donors and partners, our team was able to lovingly provide wholesome support to each 'iThemba Kid', ensuring they received quality education, support from our Social Worker and an easy integration into a loving family.

From 2016, the iThemba Homes concept was adapted into the Esther Model whereby the few remaining children in our Homes Programme are housed off-campus by families who wished to foster an 'iThemba Kid' in their own home.

PROFESSIONAL SUPPORT

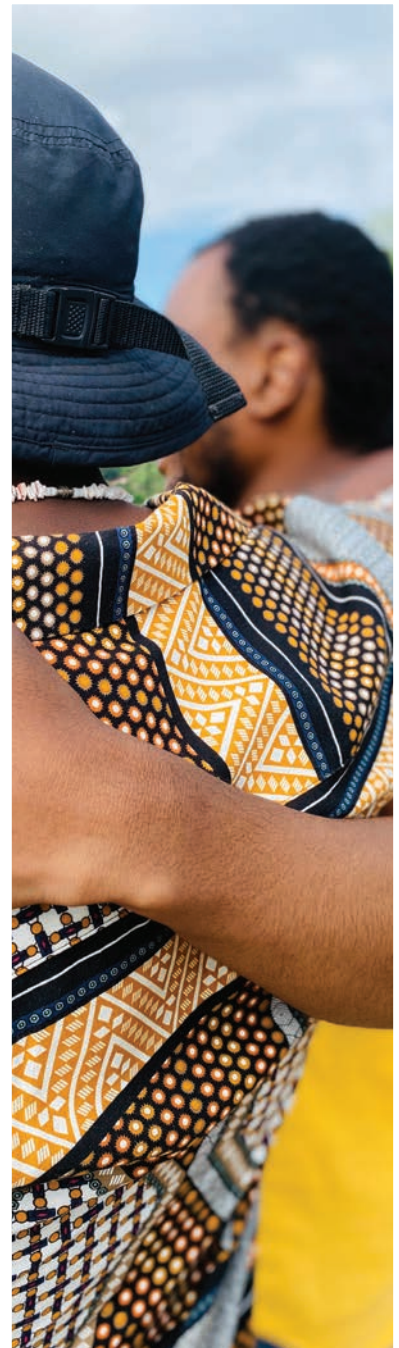
Focus on iThemba continues to provide professional support to the iThemba Kids and families through the expertise of our incredible Social Worker, Lunga, who spends time nurturing relationships and guiding them along the journey of life! Our Team financially supports the families with the funds required for **education, clothing and food**.

We are incredibly grateful for the loyal support of our friends and donors who over the years have allowed us to contribute to their growth.

A YEAR OF CELEBRATION

What a privilege it is to see our iThemba Kids growing into such fine young women and gentlemen! Two of the three Kids in our Esther Model are working towards completing their schooling this year, while the youngest will enter her senior phase of high school (Grade 10) next year. We credit the foster families for their involvement in the care and growth of each one of these children and thank them for their partnership.

We also had the absolute pleasure of celebrating the graduations of two of our fledglings recently. It was a special milestone for them as they had the chance to reflect on their journeys and reap the harvest of their hard work. Next year we hope to continue the celebrations and witness another fledgling graduate! We are grateful to Lunga for her unwavering support to our kids and for continuing to nurture relationships with them.



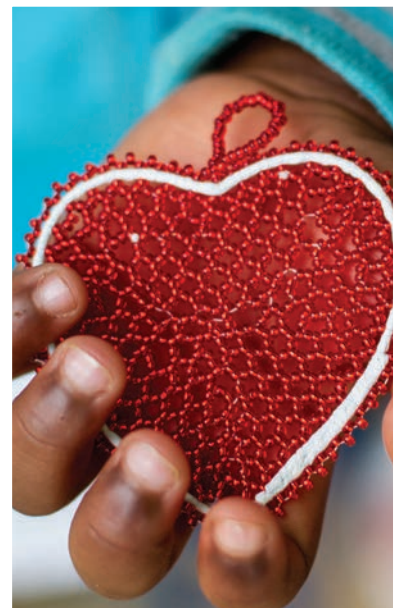
OTHER PROGRAMME HIGHLIGHTS

1. THE ITHEMBAKIDS DEVELOPMENT FUND

Our team welcomed the recent establishment of the iThembaKids Development Fund. This fund aims to give financial support to any former iThembaKid who is requiring assistance for further study or self-development. Through an application process the kids can request assistance from the fund provided their need falls within the following areas: Education, Life Skills, Health and Welfare, Arts and Culture, Sports Development. Applications are accepted bi-annually, in March and November of every year.

2. WORKING ABROAD

One of our former iThembaKids has received the most wonderful opportunity to work in the United States of America!



#SustainabilityandLongevity



iTHEMBA CAMPUS

It brings us great delight to see our beautiful Campus being enjoyed by the children, staff and parents of Waterfall Schools. Through the generosity of several forward-thinking donors and partners, this place of hope has grown to accommodate space for a Pre-Primary, Preparatory and College. We cannot express our gratitude enough to these donors for supporting our vision for the growth of the iThemba Campus.

This year we had the pleasure of facilitating the build of a state of the art STEAM Centre - Science, Technology, Engineering, Arts and Mathematics - for Waterfall College. Building began late 2020 and was finished in the first half of 2021. The official opening, held on the 22nd of October, was a significant moment for both Waterfall College and ourselves.

The Centre includes 6 classrooms and 2 laboratories with dedicated space for Physical Sciences, Life Sciences, Technology and EGD, Art, Mathematics and Commerce. This Centre promotes active engagement with spaces that can be used in various ways. The integration of subjects allows for real-life learning experiences in real-life contexts, encouraging creative thinking and a dynamic approach to the world, rooted in a South African context.

WATERFALL COLLEGE STEAM CENTRE - A SPACE FOR FUTURE

Contribution by Hayley Dennyson, Marketing and Communications Manager for Waterfall Schools

On 22 October, staff and students of Waterfall College were joined by special guests in a joyous celebration of the new STEAM Centre - honouring the faith, support and generosity that helped make this building a reality.

The facility includes Physical Sciences and Life Sciences laboratories and dedicated classrooms for Technology and EGD, Art, Mathematics and Commerce, with resources that allow for real-life learning and encourage a thoughtful, yet dynamic approach to the world.

"Our teachers have always maintained a high standard of education, but this Centre allows them to engage their students in new ways, encouraging creativity and collaboration, and inspiring learning," says College Principal Jeanette van der Merwe. "For this we are truly grateful."

None of this would have been possible without the support of our non-profit partner, Focus on iThemba. Our heartfelt thanks to The Victor Daitz Foundation, Rob and Sally Lovemore and all the donors who contributed to the build and fit-out of the STEAM Centre. Special thanks to Anthony Gibb, who worked tirelessly with Jan Keyser and his team on the construction of the building.

We look forward to sharing this space with the Waterfall community and seeing the impact it has on our students' learning.



LOOKING TO 2022

Every new year holds another opportunity for us to continue our mission of providing bridges of hope for life-altering positive change by investing in children through quality education. 2022 will have several key moments which we as a team are looking forward to with such excitement.

KEY 2022 MOMENTS

1. Expanding our iThemba Scholars Programme to 14 children - the two new children will enter Gr 0000 at Waterfall Pre-Primary
2. Having our 2 oldest scholars in Grade 8 at Waterfall College
3. Commencing the Phase 2 development of Project Star
4. Begin the groundwork for the next transformation project
5. Celebrating 10 years of partnership with our first 2 partner Pre-Schools - Siyajabula Pre-School and Embo Child Educare Centre.

GIVING OPPORTUNITIES

We would love you to partner with us in bringing contagious joy to the lives of SO many! Here are a few ways we can make a difference together.



iThemba Scholars Programme

Goal: Annual scholarships

Your donation towards deserving boys and girls receiving quality, private education at Waterfall Schools in KwaZulu- Natal, South Africa.



iThemba Educare Programme

Goal: Upliftment and support

Your donation towards facilitating quality Early Childhood Development and care to 524 children supported by our ten partner Pre-Schools.



Transformation Project

Goal: Upliftment and support

Your donation towards the transformation of a Pre-School to upgrade the facilities to support a conducive learning environment with adequate health and safety conditions.



iThemba Campus

Goal: Support sustainability & biodiversity conservation

Your donation towards developing our sustainability programme through the funding of our iThemba Campus infrastructure.

#StrongerTogether



As we humbly reflect on the past year, our hearts are filled with immense gratitude and appreciation for every friend, partner and donor whose support helped us continue our mission of Growing Hearts and Minds. Together we have made a meaningful and lasting impact to our community by investing in the futures of children through quality education.



One of our core strengths is our professional team who have an inherent passion for non-profit work and for making a significant difference to South Africa's youth.

Our Team



* Danie van den Heever
CEO AND FOUNDER



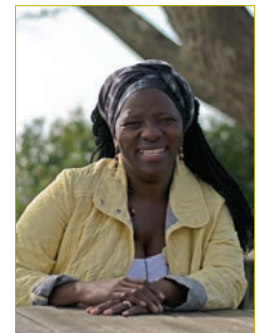
* Gavin Simpkins
STRATEGIC VOLUNTEER



Tayla-Anne Goss
TEAM LEADER



* Sharron Lane
ITHEMBA SCHOLARS
PROGRAMME MANAGER



* Lunga Mazeka
SOCIAL WORKER



Shelley Barron
MARKETING &
DONOR RELATIONS



Heather MacGregor
OFFICE ADMINISTRATOR &
DONOR ASSISTANT



Busi Khumalo
ECD MONITOR



* Stephanie Calarossi
BUSINESS MANAGER



Prudence Mbambo
HOUSEKEEPING



Lene Venter
FINANCE

* Part-time

Our Board Members

Danie van den Heever
Judy van den Heever
Ronel Goosen
Gavin Simpkins
Anthony Gibb
Patrick Tsele
Rudi van den Heever

Focus on iThemba Founder and CEO
Co-Founder and Non Executive Director
Executive Director
Executive Director
Executive Director
Non Executive Director
Non Executive Director



Talk to us:

SOUTH AFRICA - Focus on iThemba:

Tayla-Anne Goss, Team Leader

Tel: +27 (0) 31 710 1800 072 434 5519

iThemba Campus, Jacob House, 111 Ngwele Road, Hillcrest, 3610, RSA

UNITED STATES of AMERICA - Friends of iThemba:

Paul Bagnoli, Treasurer

Tel: +1 (908) 347 6831

Friends of iThemba, PO Box 127, Ninety Six, South Carolina, 29666-0127, USA

www.focusonithemba.org info@focusonithemba.org

focusonithemba | focusonithemba